



127 Leeson Drive, Ferndown, Dorset, BH22 9RD, England.

Tel: +44 (0)1202 894992 - Mob: +44 (0)7711 006766

Email: [ships@bowcrest.com](mailto:ships@bowcrest.com)

Website: [www.bowcrest.com](http://www.bowcrest.com)

## 0200767 - French Peniche



**GENERAL SPECIFICATION**

Name/Naam van het schip:	0200767
Type/Type:	French Peniche – Community Certificate (CVO) 31/7/2023
Year of Constr. /Bouwjaar:	1950
Yard/Werf:	Bouchin in Dru France
Constr. Material/Materiaal:	Steel (riveted)
Present berth/Ligplaats:	Sailing
Dimensions/Afmetingen:	39.0m x 5.06m
Draft/Diepgang:	1.0m – 1.2m
Air Draft/Doorvaarhoogte:	3.50 Wheelhouse up
Engine/Motor:	Scania 296hp
Year of engine/Bouwjaar Motor:	2010 – 18,000hrs as of 05/2020

**ASKING PRICE/VRAAGPRIJS:****€45,000 + VAT Massive price reduction for quick sale.****TECHNICAL / TECHNISCH**

<b>ENGINE/MOTOR:</b>	
HP/PK:	296
Cooling/Koeling:	Closed system
Gearbox/Koppeling:	ZF type W320 Hydraulic coupled to 4 blade prop.
Bilge Pumps/Lenspomp:	Yes
Steering/Besturing:	Hydraulic coupled to twin rudders
Bowthruster/Boegschroef:	Allegooy with DAF 160hp engine
Engineroom Heater/Motor kamer Verwarming:	
<b>ELECTRIC'S/ELEKTR.INST.</b>	
Voltage/Spanning:	24v/230v
Generator/Aggregaat:	Perkins
Inverter/Onvormer:	
Charger/Acculader:	
Batteries/Accu's:	Full bank both Service and engine start
Alternator/Wisseldynamo:	
Shore power/Walstroom:	
<b>ADDITIONAL INSTALLATIONS:</b>	
Diesel Tank/Brandstoftank:	2,300lts Aft – 1,000lts fwd
Fresh Water/Watertank:	1,500lts
Soil Tank/Vuilwatertank:	
Gas/Gas:	Propane
Heating/Verwarming:	Electric rads
Hot Water/Warm Water:	
Water Pressure Syst./Waterdruksysteem:	Hydrophore
Insulation/Isolatie:	Yes
Gas Detector/Gas Detector:	

**NAVIGATION / NAVAGATIE**

<b>VHF/Marifoon:</b>	2 x Sailor VHF
<b>Compass/Kompas:</b>	Yes
<b>Auto Pilot/Auto Pilot:</b>	
<b>Depth Meter/ Dieptemeter:</b>	Yes
<b>Weather Fax/Weer Fax:</b>	
<b>Log/Snelheid:</b>	
<b>GPS/GPS:</b>	
<b>Navigation Lights/Navigatieverl:</b>	Yes 7 blue Board
<b>Radar/Radar:</b>	Yes
<b>Instruments/Instrumenten:</b>	Full Instrumentation

**ADDITIONAL / DIVERSEN**

<b>Anchor/Ankergerie:</b>	2 x klip Anchors fwd - 1 x Klip Anchor Aft
<b>Anchor Winch/Ankerlier:</b>	Power winch fwd manual winch aft
<b>Car crane/Autokraan:</b>	
<b>Tender/Boot:</b>	Yes
<b>Sat TV/Sat TV:</b>	
<b>Extras/Extra's:</b>	
<b>Ballast/Ballast:</b>	
<b>Masts/Masten:</b>	Nav. Mast
<b>Rigging/Tuigage:</b>	
<b>Sails/Zeilten:</b>	
<b>Displacement/Waterverpl:</b>	374 tons loaded
<b>Last Hull Survey/Laatste Hellingbeurt</b>	Bottom Plating completely renewed in 2003 6mm Plate Vessel has Double bottom. Hold Space divided into two by Ballast Bulkhead length 10m & 11m
<b>Last Painting/Laatst geschilderd</b>	
<b>Paint Colour/Verf Kleur:</b>	

**ACCOMMODATION / ONDERDAK**

<b>Cabins/Slaapkamers:</b>	2 Aft - 1 Fwd
<b>Berths/Slaapplaatsen:</b>	
<b>Galley/Uitv. Kombuis:</b>	Open Galley with Oven, Hob, sink & cupboards
<b>Saloon/Woonkamer:</b>	Good size
<b>Toilets/Toilets:</b>	1 x
<b>Bath/shower/Douche:</b>	Shower
<b>Wheelhouse/Stuurhut:</b>	Original - (folding)
<b>Outside Deck Space:</b>	
<b>Headroom/Stahoogte:</b>	

## SHIP INVENTORY / SCHIP INVENTARIS

Item	Quantity
Normal ships inventory including ropes, fenders, paints, spares, lub oils etc.	

## CO-BROKERS COMMENTS

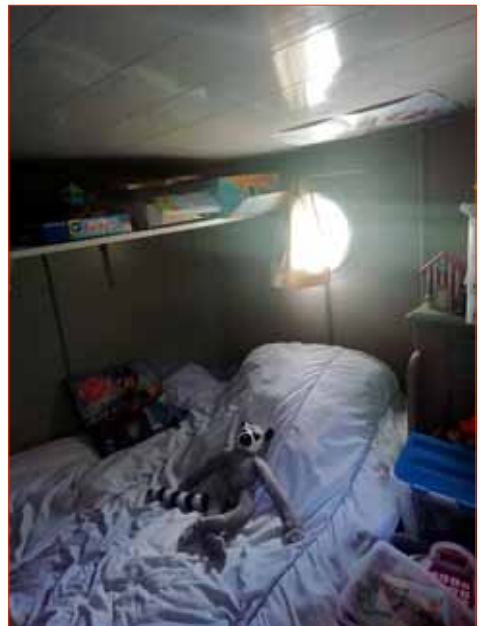
--

## BOWCREST MARINE COMMENTS

Very Spacious Peniche Barge which can continue working or will make a super barge for conversion into fabulous liveaboard home which is capable of extensive European Waterways cruising.

Bowcrest Marine give notice that: these particulars do not constitute part of an offer or contract: they are for the guidance only of prospective purchasers and must not be relied upon as statements of fact: the descriptions provided herein represent the opinions of the author and whilst given in good faith should not be construed as statements of fact: nothing in these particulars shall be deemed a statement that the vessel is in good condition or otherwise nor that any installations or equipment or component parts thereof are in good working order. All prospective purchasers are strongly advised to engage the services of a Qualified Marine Surveyor experienced in this particular type of vessel.

Bowcrest Marine geeft hierbij aan dat dit document uitsluitend bedoeld is als een informatie document die door ons is opgesteld naar beste weten en vertrouwen. De auteur van dit document kan op generlei wijze aansprakelijk worden gesteld voor de inhoud van dit document. Er kan op generlei wijze aanspraak gemaakt worden op de conditie van de beschreven onderdelen, elektronica, technische installatie, of het vaartuig. Iedere potentiële koper wordt aangeraden om een gekwalificeerde inspectie op het vaartuig te laten plaatsvinden.





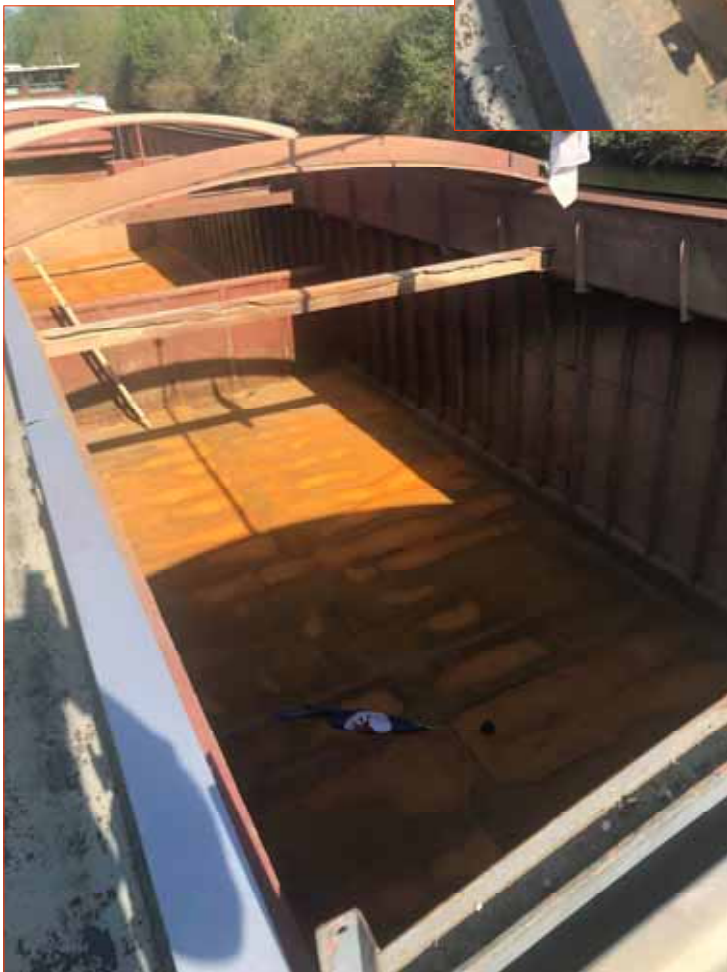










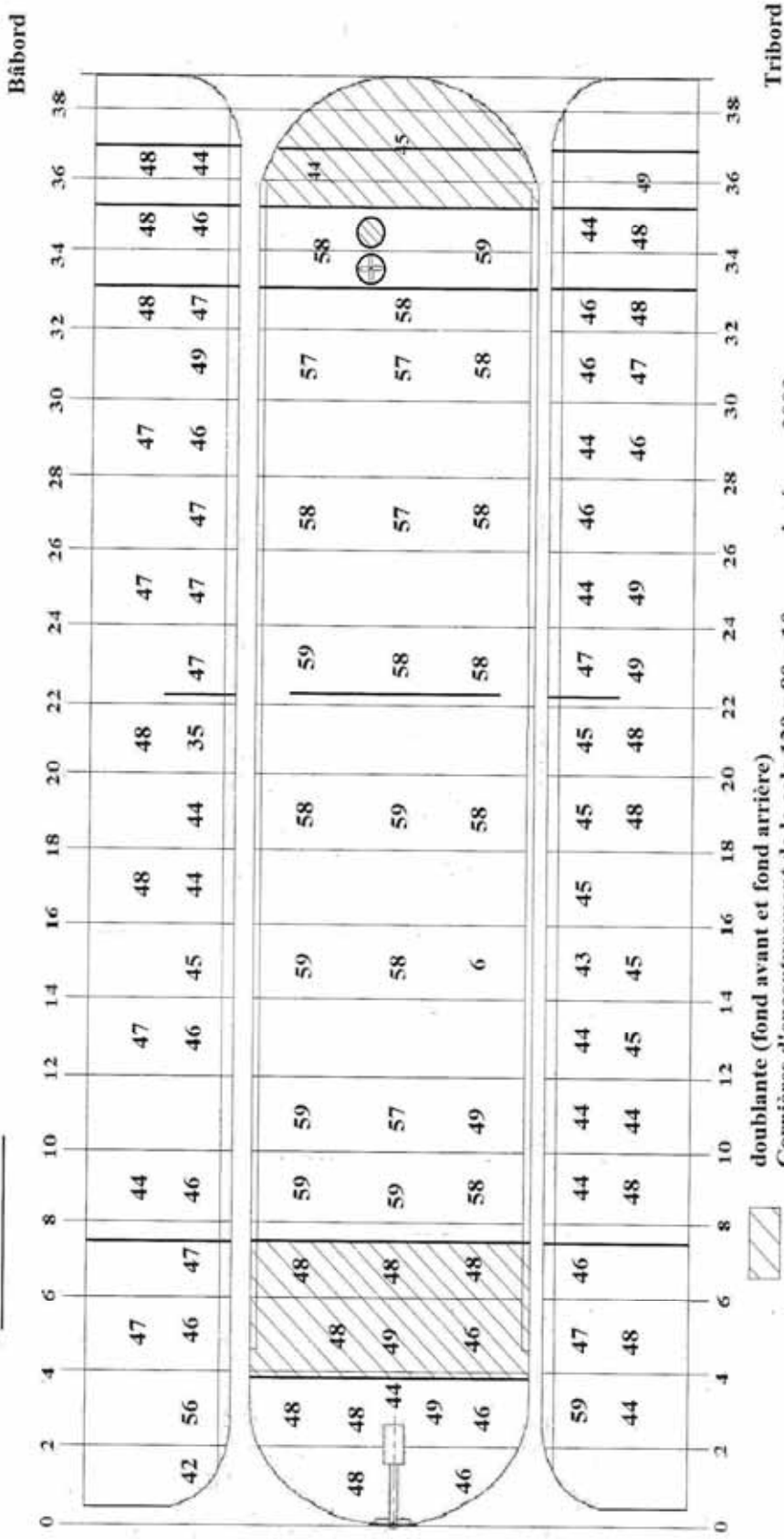






# PLAN DE SONDAGE

**BATEAU :** MARITZA (EX ROSARIO)      **Longueur :** 38 m 53  
**PROPRIETAIRE :** M. PETIT Johan      **Largeur :** 5 m 06  
**Matricule :** P 12 783      **Tirant d'eau :** 2 m 50  
**Lieu :** PONT DE LOUP  
**Date :** 25 avril 2017



doubliante (fond avant et fond arrière)  
 Cornières d'encourement de la cale 120 x 80 x 10 - remplacées en 2003  
 Fond de cale remplacé en 2003 - épaisseur 6 mm  
 Tillac métallique installé en 2003