



127 Leeson Drive, Ferndown
Dorset, BH22 9RD
England

VAT Registration No. 800 0483 84

0200341 - Dutch Mortorklipper



Phone: +44 (0) 1202 894992
Fax: +44 (0) 2392 940 243
Mob: +44 (0) 7711 006766
Email: ships@bowcrest.com

Web Site: www.bowcrest.com



GENERAL SPECIFICATION

Name / Naam van het schip:	0200341	Type / Type:	Motor Klipper <i>Vessel is SSR Registered.</i>
Year of Constr. / Bouwjaar:	1910	Yard/ Bouw werf:	J. Boot, Woubrugge, Netherlands
Present berth / Ligplaats:	France	Dimensions / Afmetingen:	23.61m x 4.43m
Draft / Diepgang:	1.0m aft, 0.60m fwd	Air Draft / Doorvaarhoogte:	3.5m W/hse up – 207m W/hse down
Engine / Motor:	DAF 615 135 hp Eng. No E15616	Year of engine / Bouwjaar Motor:	1980's±

ASKING PRICE / VRAAGPRIJS:	€185,000
-----------------------------------	-----------------

TECHNICAL / TECHNISCH

ENGINE / MOTOR		ELECTRIC'S / ELEKTR.INST.	
HP / PK:	135 @ 2,400 RPM	Voltage / Spanning:	24 v / 220 v / 380v
Cooling / Koeling:	Inter-cooling	Generator / Aggregaat:	Perkins 3 cyl. Diesel, 15 KVA, revision 1995
Gearbox / Koppeling:	PRM 3:1 – G 0124/310 SVR3 coupled to right hand prop.	Inverter / Omvormer:	Victron Combi 75A/3,000W
Bilge pumps / Lenspomp:	Yes	Charger / Acculader:	<i>Combi as above</i>
Steering / Besturing:	Mechanical by wheel & chain	Batteries / Accu's:	Full bank of both Domestic and engine start batt's.
Bowthruster / Boegschroef:	Fwd retractable keel & rudder	Alternator / Wisseldynamo:	
Engine room Heater / Motor kamer Verwarming:	Yes	Shore power / Walstroom:	220v
ADDITIONAL INSTALLATIONS:		Hot Water:	
Engine Room – 4.0 Square Metres (1.5mx2.6mx 2.25mht) (walls (some) are insulated)	Contains: Main engine DAF 125 hp 6 cylinder Gearbox, Spare fuel tanks (2) 600 litres Hatch and ladder to deck area, Gel deep cycle Batteries (2x 12v) Charger/Inverter 75A/3000W, Fuse box Control switch shore power/generator power, Hatch/ladder to deck area, Skylight, Exhaust vented to stern of boat, Fire extinguisher, Air Compressor off engine; and air tank, Lighting is: 24v	Stern Area	Contains: Main diesel tank (1,200 litres) Access to Prop Shaft Access to stern gland packing (note: automatic greasing of stern gland occurs) Storage
Diesel Tank / Brandstoftank:	2 x 1,200 lts, 1 x 500 lts, 1 x 200 lts - in stern for generator and heater.	Gas / Gas:	Yes – in deck locker
Fresh Water / Watertank:	1,350 lts Stainless Steel Tank	Heating / Verwarming:	Air-Con providing both hot & cold. Wood Burning stove with oven in Saloon.
Soil Tank / Vuilwatertank:	30 lts (unconnected)	Water Pressure Syst. / Waterdruksyst:	Wasserknegt 24 V
Gas Detector / Gas Detector:		Insulation / Isolatie:	Fully Insulated

NAVIGATION / NAVAGATIE

VHF / Marifoon:	Sailor RT144 with Atis	Compass / Kompas:	Yes
Auto Pilot / Auto Pilotoot:		Depth Meter / Dieptemeter:	
Weather Fax / Weer Fax:		Log / Snelheidsmeter:	
GPS / GPS:		Navigation Lights / Navigatieverl:	Yes
Instruments / Instrumenten:	Full instrumentation	Radar / Radar	

ADDITIONAL / DIVERSEN

Anchors / Ankergerie:	D.m.v spudpalen Fwd. Klip Anchor	Car crane / Auto crane:	No, but there is a Davits
Anchor Winch / Ankerlier:	Elektr.-hydraulic, dmv spudpalen Traditional Pattern Manual Barge winch	Tender / Bijboot	
Sat TV / Sat TV:		Extras / Extra's:	See details
Ballast / Ballast:	500 kg. Steel blocks	Rigging / Tuigage	
Masts / Masts	Navigation mast	Sails / Zeilen	
Displacement / Waterverplaatsing:	50 tons	Constr. Material / Bouwmateriaal:	Steel riveted hull with welded steel
Last Hull Survey / Laatste Hellingbeurt	2007	Last Painting / Laatst geschilderd	2009

ACCOMMODATION / ONDERDAK

<p>Cabins / Hutten: 12 Square Metres (4.0mx3.0mx 1.98mhgt)</p> <p>5.0 Square Metres (2.3mx2.15mx 1.82mhgt)</p>	<p>Master Cabin. Contains: Double bed (2.0m x1.6m) mosquito netting, Electric blanket, (dual control), Bedside tables, Full length wardrobe and shelves (built in), Hand basin, with cupboards and drawers, (2) – one full length, one large wall, Portable air conditioner – remote control, Fresh air fan intake, TV jack, Power available 220v - 24v</p> <p>Study/Spare Bedroom. Contains: Double bed -built in (2.25mx1.2m), Desk (fold down), Bookshelf floor to ceiling, HP printer (deskjet), Cupboard, Storage under bed, Skylight, Lighting is:24v, Power available, 220v - 24v</p>	<p>Berths / Slaap plaatsen:</p>	
<p>Galley / Kombuis:</p>	<p>Contains: Fridge/Freezer (electric 220v), Combi Microwave, Bench Top Oven, Gas Hob cooker, Extractor fan, Spice rack, Cupboards and storage, Dishwasher Sink and Bench, Hot/Cold water (pressure), Hand</p>	<p>Saloon / Salon: 22 Square Metres (5.25mx4.2mx 2.12mhgt) <i>Open plan to Galley</i></p>	<p>Contains: Large double glazed windows, Two seater sofa, Wing back chair, Antique high back chair Coffee table (2), Sideboard, Side tables (2), Sewing box, Wine rack, Radio/Tape deck, amplifier & speakers – remote</p>

	water pump, Coffee maker, Fire extinguisher, Inside/Outside thermometer, Full range of pots, pans etc. Full range of cutlery (for 6), cooking utensils, Table (extendable for 6-8), Dining chairs – 9 (matching), Lighting is: 230v 24v, Power available 220v		control, Wood burning stove (with oven), and mantelpiece, Skylight, Floor Rug (2mx3m) Air Conditioning (Cold and Hot) – remote control, Fan, Oil Lamp chandelier, Standard lamp, Pictures, Phone jack, TV jack, Lighting is: 230v -24v Power available 220v, 24v
Toilets / Toiletten:	1	Bath/shower/ Douche: 3.6 Square Metres (1.8mx2.0mx2.03m hgt)	Contains: Bath (1.6 m), Shower, Electric hot water (100ltr), Gas hot water option, Hand basin and cupboard, Mirror (large wall), Extractor fan, Electric toilet, Black water tank (unconnected) – 30 litre, Lighting is: 230v - 24v, Power available 24v
Workshop: 17 square metres (4.5mx4.0x2.45m/ 1.88m hgt)	Contains: Ladder access to forward deck, Generator (Perkins 3 cylinder 85 hp 1, 2 or 3 phase; 25,000 kva) Generator Fuel Tank – 175 litre Extractor Fan Fresh Water Tank – 1,000 litre Fresh Water Pump and Accumulator - range 1,5 – 2.5 atmospheres (can go to 4.5) Washing Machine, Dryer, Fridge/Freezer (gas), Deck Wash Pump, Steel Work Bench, Storage Shelves. Lighting is: 230v, 24v Power available is: 230v, 24v On line is: , Gas, Compressed air Stored are: Paints, brushes etc., Deck chairs (2x loungers, 4x deck chairs) BBQ, Spares, Gas Bottles (various for the different European countries), Power cable (75 metres) Water Hose (75 metres), Ropes, Diesel heaters (2), Shade tent for deck, Tools, including: Power drill, Cordless drill, Micro drill/grinder/buffer set, Portable grinder, Socket set, Ring spanners, screw drivers etc. Vice, Chainsaw, Electric jigsaw, Land anchors.	Wheelhouse/ Stuurhut: 7.5 Square Metres (3.0mx2.5mx 1.92m hgt) <i>(Collapsible to give air height 2.65 metres)</i> Wheelhouse Roof Area;	Contains: All around vision, Front & rear opening windows, Roll down blinds, Port/Starboard sliding doors, Stern anchor control, Spud pole control, Searchlight (manual directional), Rudder direction indicator, Helm and Helm locking, Gears/throttle (morse type), Wipers (compressed air operated) Horn (compressed air operated), Siren, VHF, Intercom to bow and to lounge All relevant switches for lights, etc., Solar panel monitor, Radio/tape/speakers, Table, Chairs (2), Helmsman chair, Carpet, Fold out 1.01m x 2.5m bed, Storage, Squabs Flags, Lighting is: 24v Contains: Solar panels (4x), Search light, Poles (stainless steel 4x for clothes line), Shore Power point connection (on external wall)
Entry Porch – 3.6 Square metres (1.8x2.0x2.06hgt) <i>(walls and roof are insulated)</i>	Contains: Stairs to Main Entrance, Provides access to, Lounge – Galley - Bathroom - Master Cabin - Workshop. Coat Rack and Shelf, Small Storage cupboard, Dehumidifier Storage space behind stairs Black water pump out point Lighting is: 230v 24v	Passageway – 3.7 Square Metres (3.7x1.0x1.78/2.05hgt) <i>(walls and roof are insulated)</i>	Contains: Provides access to Engine room - Study/spare bedroom - Wheelhouse via Stairs - Stern area with main diesel tank, storage etc. Hatch to deck area Full length cupboards and shelf storage (built in), TV aerial (internal manual lift/turn ability) Monitoring dials for electricity management, Fire extinguisher Iron/ironing board, Vacuum cleaner, Lighting is: 24v, Power available 220v 24v

Bow Area:	<p>Contains:</p> <p>Forward anchor Spud pole – hydraulic operated (drops 2.5 metres below bow) Forward remote spud control Gas locker (2 x 15kg bottles, dual connection), Speaker from wheelhouse, Mast and derrick – collapsible, Forward retractable keel and rudder, Vespa scooter (50cc), Hatch for access to w/shop</p>	Forward Hold Area:	<p>Contains:</p> <p>Lift off hold cover for large scale access to w/shop, Gangplank - aluminum (6 metre), Gangplank - wood (3 metre), Boat ladder Barge pole (6.5 metre), Depth indicator pole, Chimney for lounge wood burner</p>
Stern Area:	<p>Contains:</p> <p>Main diesel tank (1,200 litres) Access to Prop Shaft, Access to stern gland packing (note: automatic greasing of stern gland occurs), Storage</p>		
Main Cabin Area:	<p>Contains:</p> <p>Main entrance to boat, Saloon skylight, Area for table, chairs, loungers etc., Inserts for 4x stainless steel poles for clothesline, Insert for Gas BBQ</p>	Rear Cabin Area:	<p>Contains:</p> <p>Engine room skylight, Engine room hatch, Passage hatch, "Decorative" DAF chimney exhaust, Chimney for Saloon fire Air-con heat exchanger, Horn</p>
Stern Area:	<p>Contains:</p> <p>Tender (steel), Derrick, Bicycles (2x), Flag pole</p>	Headroom / Stahoogte:	1.82m – 2.12m

BOWCREST MARINE COMMENTS

This is an extremely attractive and sound Klipper barge with lovely lines. Sold by Bowcrest Marine Ltd. to the present owners she has been regularly cruised and maintained in excellent order. She offers very well planned and spacious accommodation, professional quality mechanical installations and she has the added benefit of a Spudpal which all serious bargees know how useful these really are. Originally owned by a professional Dutch Barge family she is a great barge at a sensible and realistic price and includes just about everything you need to cruise.

"In this case we are acting as Brokers only. The Vendor is/ is not selling in the course of a business. Whilst every care has been taken in their preparation, the correctness of these particulars is not guaranteed. The particulars are intended only as a guide and they do not constitute a term of any contract. A prospective buyer is strongly advised to check the particulars and where appropriate at his own expense to employ a qualified Marine Surveyor to carry out a survey and/or to have an engine trial conducted which if conducted by us shall not imply any liability for such engine on our part."

"In dit geval zijn wij als enige Brokers. Verkoper is / * niet verkoopt in de loop van een bedrijf. Terwijl iedere zorgvuldigheid is betracht bij de voorbereiding, de juistheid van deze gegevens niet gewaarborgd is. De gegevens zijn alleen bedoeld als gids en ze vormen geen een looptijd van een contract. Een aspirant-koper wordt sterk aangeraden om de gegevens te controleren en eventueel op eigen kosten naar een gekwalificeerde Marine Surveyor in dienst voor het uitvoeren van een enquête en / of hebben een motor trial uitgevoerd die niet indien dit is uitgevoerd door ons geen aansprakelijkheid voor dergelijke motor van onze kant houden. "

Please note. The photographs contained in this brochure are not laid out in our normal format and are as supplied by the owners.





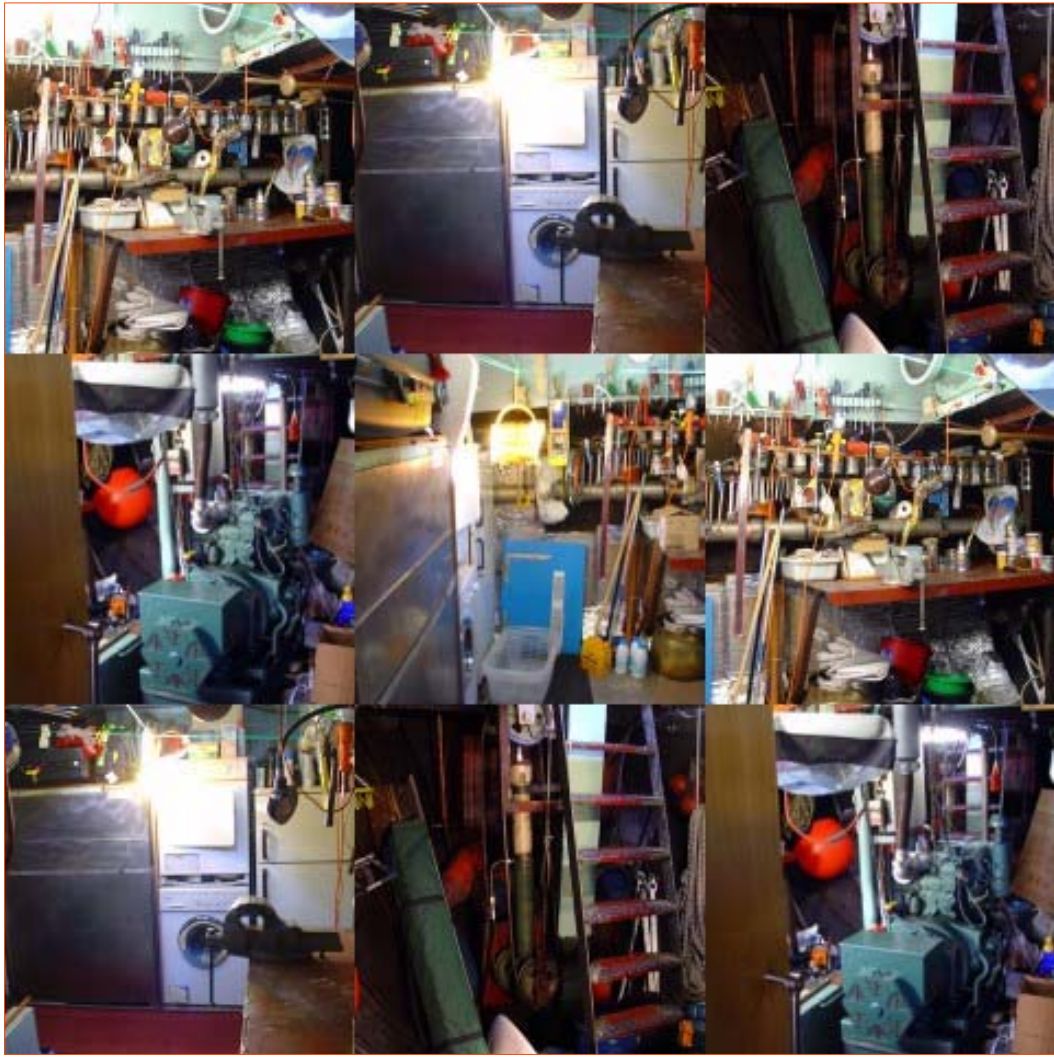




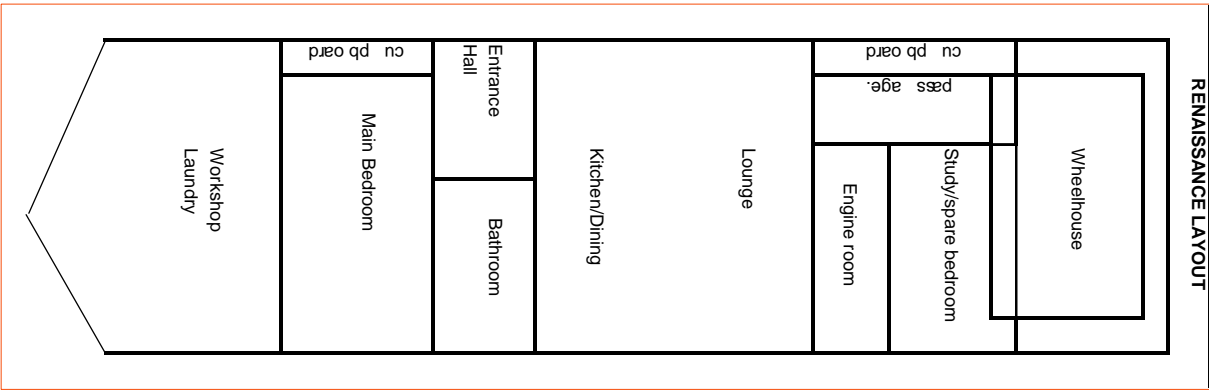


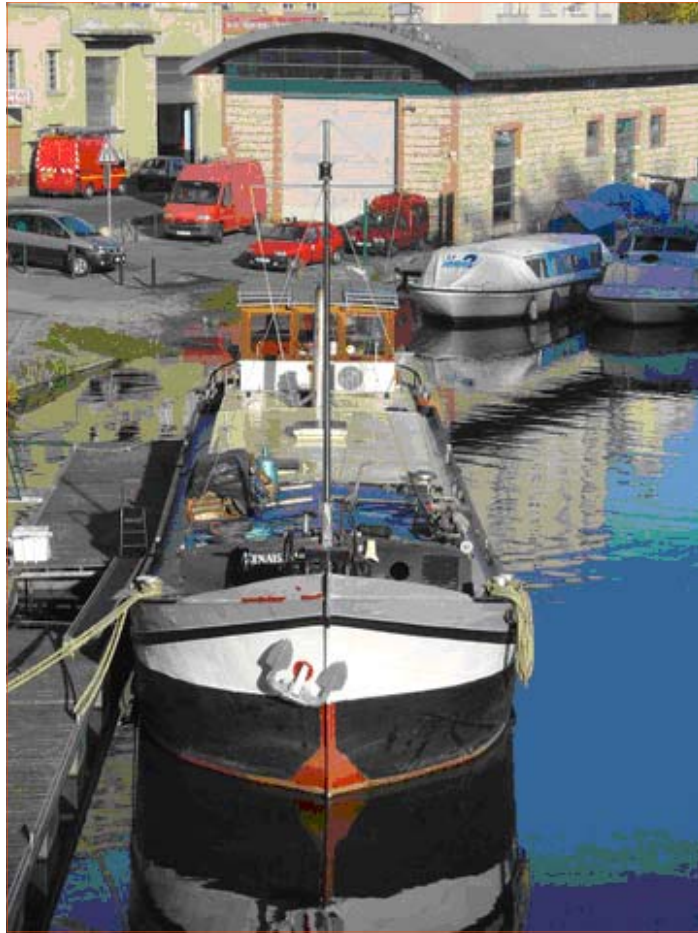




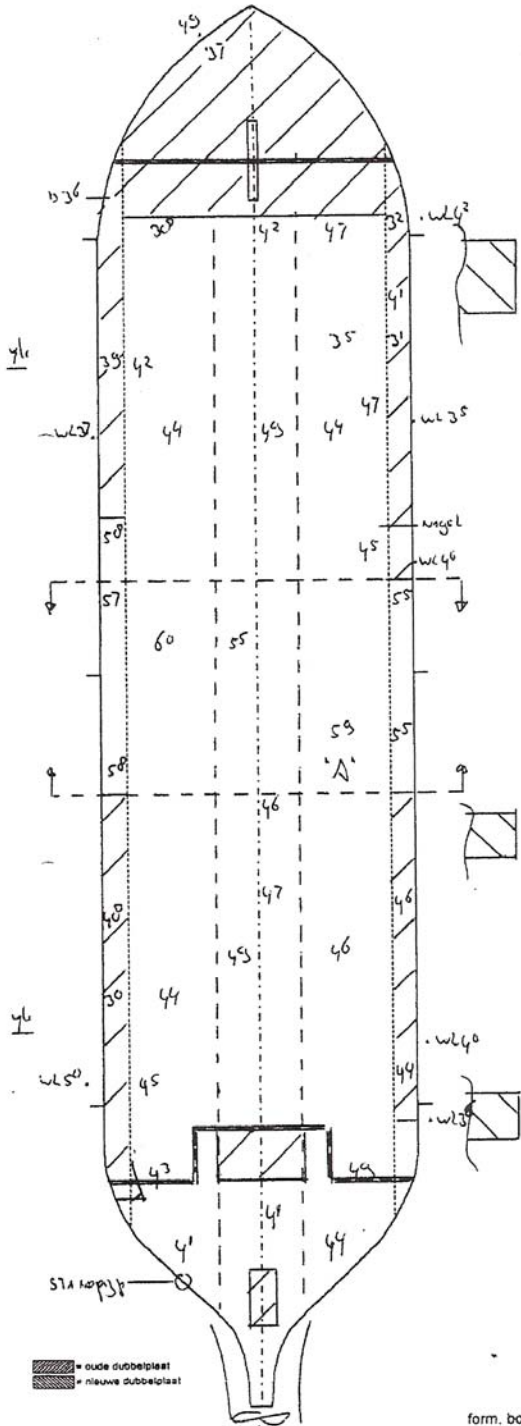












Scheepsnaam : Strijd
 Type : Ex ber. ongetuigd
 Eigenaar : GEBR. Oelen
 Scheepsnr. : 2303557
 Afmetingen : 33,10 x 5,04 x 1,67 meter
 Bouwjaar : 1915
 Tonnage : 0
 Schotten : 2x waterdicht
 Ruimen : 1 ingericht als opslagplaats
 Spantafstand : 500 mm
 Roeren : 1x staal op hak, speling ca. 3mm
 Schroef : 3 blads Gietijzer, diameter 900mm
 Gland : vetgesmeerd, asdiameter 83mm, speling ca. 1mm
 Buikdenning : azobe
 Toestand onder buikd. : bij "A" geïnspecteerd, hier keurig in het vet en verder voor zover zichtbaar goed bevonden.
 Toestand vlak/kimmen : normaal
 Min. maat vlak : 3.5 mm Min. maat kim : 4.3 mm

Geadviseerde reparaties:

- stukje van de koelplijp vernieuwen;
- lekkage roer repareren;

Inspectie omstandigheden : schoon en deels nat

Herkeuring : 08-2013
 Plaats : Rotterdam
 Datum : 21-08-2007
 Expert : C.J. Moolj
 Handtekening

Gebruikt meetapparaat: Sorimex

Op de uitgevoerde werkzaamheden zijn de algemene voorwaarden van de Vereniging van Experts voor Kust-, Rijn- en Binnenvaart van toepassing. Deze algemene voorwaarden zijn gedeponeerd ter griffie van de Arrondissementsrechtbank te Rotterdam op 10 Februari 2003, onder nummer 36/2003.

De inspectie werd steekproefsgewijs uitgevoerd. De diktematen vermeld op het keuringsrapport gelden uitsluitend voor de gemeten plaatsen.